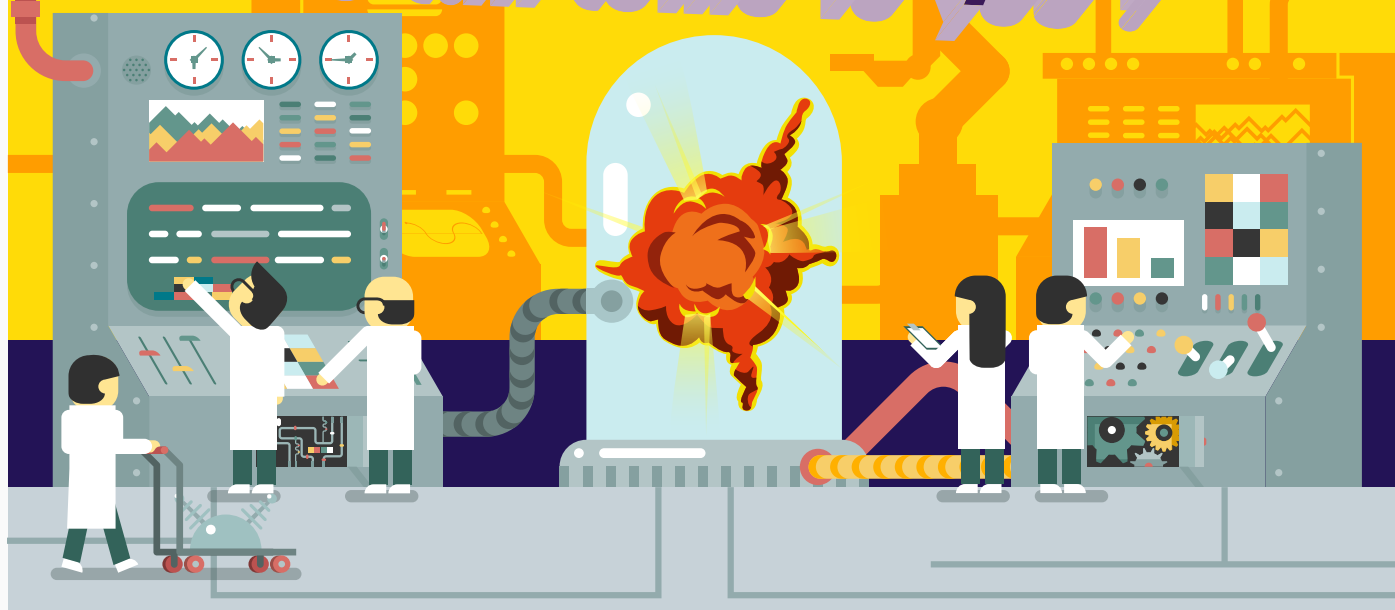


**Whatever your type of lab.
Whatever your instruments...
We can come to you!**



Training delivered in your lab, on your instruments, at a time that suits you.

Basics of HPLC, GC, LC-MS, GC-MS and Sample Preparation

Troubleshooting HPLC, GC, LC-MS, GC-MS and Sample Preparation

Method Development

BioChromatography & Mass Spectrometry

Instrument Training

Statistics for Analytical Chemistry

Laboratory Leadership

Consultancy

We also provide scheduled courses at several venues in the UK.
Have a look at our training calendar for upcoming events.

<http://www.crawfordscientific.com/training-online-calendar.asp>

Chromatography and Mass Spectrometry Training Courses

Courses 2016/17	Jul	Aug	Sept	Oct	Nov	Dec	Jan	Feb	Mar	April	May	Jun
HPLC Operator					9						2	
HPLC Fundamentals	5				10		17				3	
HPLC Troubleshooting & Maintenance	6						18					
HPLC Troubleshooting & Maintenance (PLUS Optional second practical day)*			6-7						7-8			
HPLC Method Development					15-16						10-11	
GC Operator							25					
GC Fundamentals		9					26		21			
GC Troubleshooting & Maintenance		10							22			
GC Troubleshooting & Maintenance (PLUS Optional second practical day)*				11-12							24-25	
GC Method Development			20-21							25-26		
LC-MS for the Chromatographer (PLUS Optional second practical day)*				18-19								
LC-MS Interpretation									29			
GC-MS for the Chromatographer (PLUS Optional second practical day)*	12-13											
GC-MS Interpretation					17			17				
Introduction to Statistics for Analytical Chemists			13							4		
Advanced Statistics for Analytical Chemists			14							5		
Analytical Method Validation				6							16	
Dissolution												
Principles of Solid Phase Extraction												
ICP-MS												

* - for a maximum of 6 delegates, attendance at the previous days course is a pre-requisite

www.crawfordscientific.com/training.htm

To discuss your training needs simply phone us : 01357 522 961

email us : training@crawfordscientific.com

Or visit : www.crawfordscientific.com

Crawford Scientific Ltd.
Holm Street
Strathaven
ML10 6NB

