
7694E Manifold Assembly

| Description | HP Part No. | Qty |
|------------------------------------|--------------------|------------|
| 1 Zero dead volume union | 325-045-HSP | 1 |
| 2 Needle-assembly | 301-013-HSP | 1 |
| Needle-assembly Silcosteel | 301-220-HSP | |
| 3 Heater, element 50W | 420-045-HSP | 2 |
| 4 Sensor, temperature PT 100 | 435-001-HSP | 1 |
| 5 Needle holder | 301-043-HSP | 1 |
| 6 Body, manifold | 998-0000049-EHS | 1 |
| 7 Washer, fiberglass | 300-493-HSP | 1 |
| 8 Loop mandrel | 301-091-HSP | 1 |
| 9 Loop, sampling 1 cc Ni, or | 321-055-HSP | 1 |
| Loop, sampling 3 cc Ni, or | 321-056-HSP | |
| Loop, sampling 1 cc Silcosteel, or | 321-058-HSP | |
| Loop, sampling 3 cc Silcosteel | 321-059-HSP | |
| 10 Six-port valve | 366-102-HSP | 1 |
| 11 Spring, pull out needle | 301-042-HSP | 1 |
| 12 Disk, needle guide | 641-0204050-HSP | 1 |
| 13 Isolation ring manifold | 998-0000058-EHS | 1 |
| 14 Ring needle holder | 998-0000010-EHS | 1 |
| 15 Block, vial heater (lower) | 998-0000050-EHS | 1 |
| Associated screws | | |
| A Screw, M3 X 10 pan head | 0515-0925 | 2 |
| B Screw, M4 X 16 hexagonal head | 300-840-HSP | 1 |
| C Screw, M4 X 12 socket head cap | 0515-1196 | 2 |
| D Washer, D3 toothed | 2190-0638 | 2 |
| E Washer, D4 toothed | | 2 |
| F Washer, D3 flat | 3050-0891 | 1 |
| G Screw, M3 X pan head | | 1 |

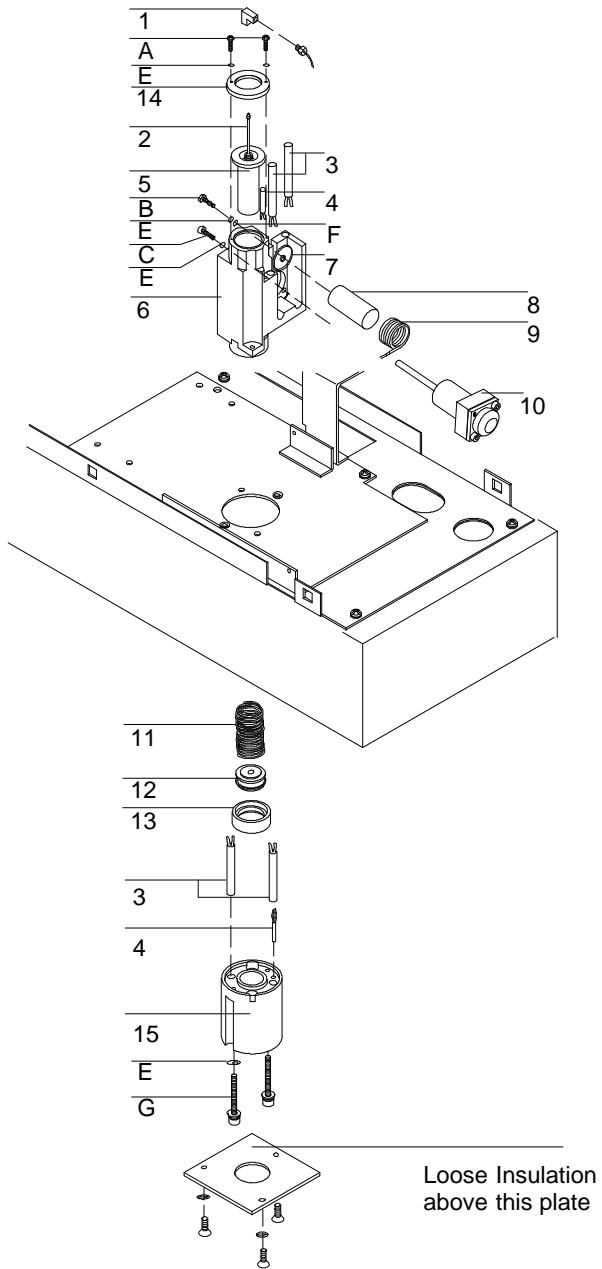


Figure 2-8. Manifold Assembly