

Flame Ionization Detector (FID)

Description	HP Part No.	Qty
1. Collector Assembly:	G1531-60690	1
2. PTFE Chimney (optional)	19231-21050	–
3. Collector Nut	19231-20940	1
4. Spring Washer	3050-1246	1
5. Ignitor Castle	19231-20910	1
or optional hastelloy component	19231-21060	1
6. Ignitor (Glow Plug) Assembly	19231-60680	1
6A. Ignitor Cable Assembly	G1531-60680	
7. Upper/Lower Collector Insulator	G1531-20700	2
8. Collector Body	G1531-20690	1
9. Spanner Nut (Collector)	19231-20980	1
10. Collector Mount	G1531-20550	1
11. Collector Housing	G1531-20740	1
12. Gasket	0905-0915	1
13. Screw, M4 x 25 mm, Torx, T20	0515-2712	3
14. Screw, M4 x 10 mm, Torx, T20	0515-2495	5
15. Interconnect Clamp	19231-00040	2
16. FID Interconnect Assembly	G1531-60710	1
17. FID Signal Board	G1531-60010	1
18. FID Interface Board	G1531-60020	1
19. Screw (captive) M4 x 20 mm, Torx, T20	1390-1024	4
20. Mounting Pallet	G1531-40020	1
21. Base Spanner Nut	19231-20990	1
22. Thermal Strap	G1531-00100	1
23. Jets:		1
Packed Column FID		
– Capillary Column (0.011 in. id)	19244-80560	1
– Packed Column (0.018 in. id)	18710-20119	–
– High Temp (for use in simulated distillation, 0.018 in. id)	19244-80620	–
Capillary Only FID		
– Fused Silica Capillary/530 μ (0.011 in. id)	G1531-80560	1
– High Temp Jet (0.018 in. id)	G1531-80620	–
24. Base Weldments:		1
Packed Column FID	G1531-80580	–
Capillary Column FID (not shown)	G1531-80630	–
25. Heater/Sensor Assembly	G1531-61140	1
26. Nut W/Lock Washer	0535-0043	2
27. FID Block Insulation	G1531-00030	1
28. FID Seal Insulation		
– Capillary	G1531-00130	1
– Packed	G1531-00160	1
29. Packed FID Column Adapters:		1
– FID/NPD Capillary Column	19244-80610	–
– FID/NPD 1/8 in. Packed Column	19231-80520	–
– FID/NPD 1/4 in. Packed Column	19231-80530	–
30. Nutwarmer Insulation (Order qty 3)	19234-60715	3
31. Nutwarmer Cup Assembly	19234-60700	1

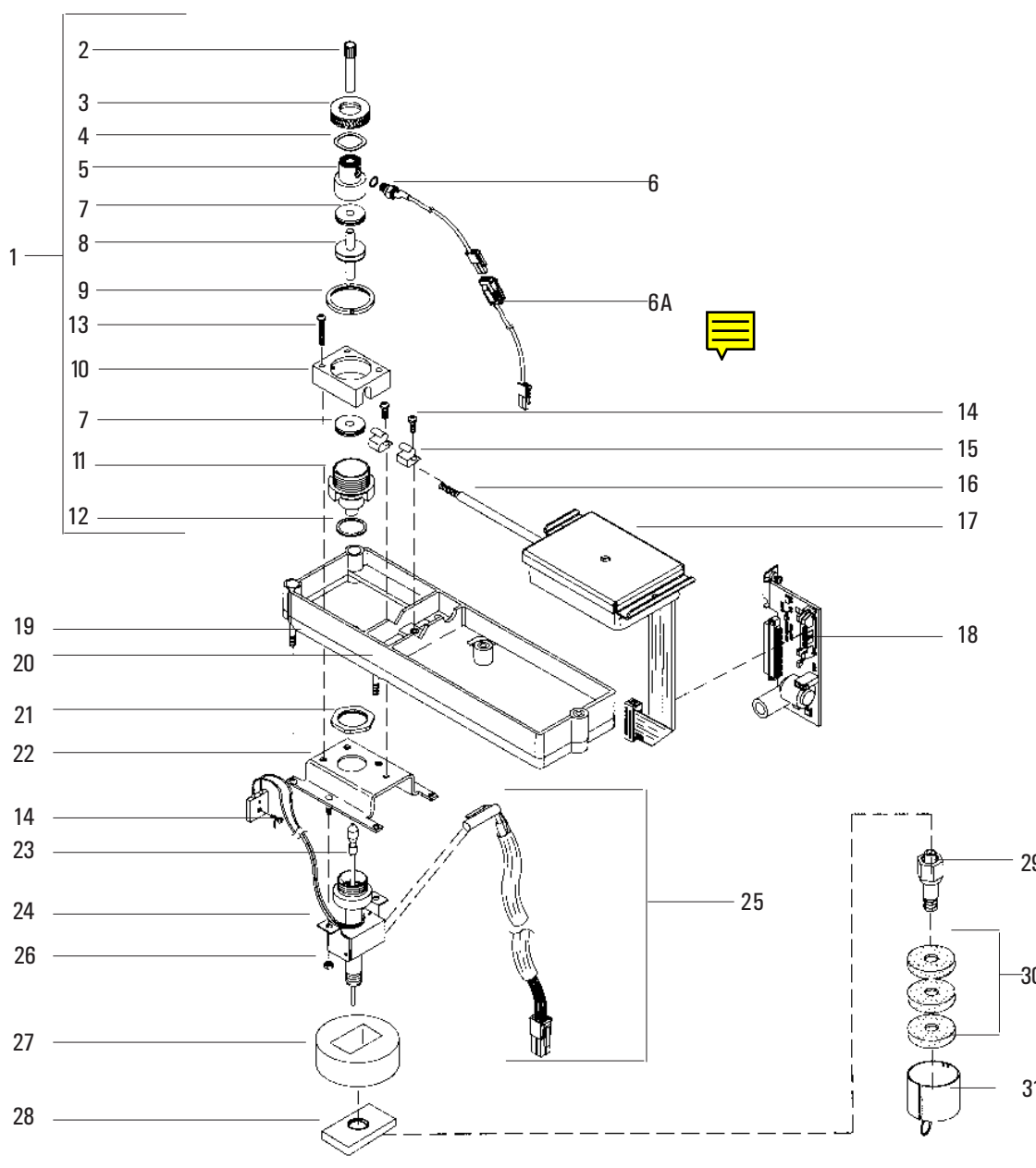


Figure 1320-3 Exploded diagram of the Flame Ionization Detector.