

Pneumatic Carrier Assembly G1585A

Description	HP Part No.	Qty.
1. Flow Support Bracket	G1530-01220	1
2. Flow Module Back-up Plate	G1530-00580	1
3. Flow Carrier Assy.	G1530-80790	2
4. PPIP Manifold Assy, 0–100 psi (with inlet)	G1543-60500	1
5. Spacer, Pressure Gauge	19243-40010	2
6. Screw, M4 x 25 mm, Torx T20	0515-2712	2
7. Screw, M4 x 12 mm, Torx T20	0515-2496	12
8. Flow Cover	G1530-01240	1
9. S/SL Manifold Assy, 0–30 psi	G1544-60500	1
10. Nut, Hex w/lkwr	0535-0043	2
11. Reg/Gauge Assy. (Order HP part no. G1577A)	19246-60640	1
12. Chemical Trap Bracket	05890-00810	1
13. Screw, Machine, Flat Head, M4 x 10, Torx T20	0515-2725	2
14. Chemical Trap Assy.	05890-80710	2
15. Label Plate Blank	G1530-90705	1
Label Plate PPIP	G1530-90740	NS
Label Plate S/SL	G1530-90720	NS

Note Minimum Replacement Level is G1530-80790

Pneumatic Carrier Assembly

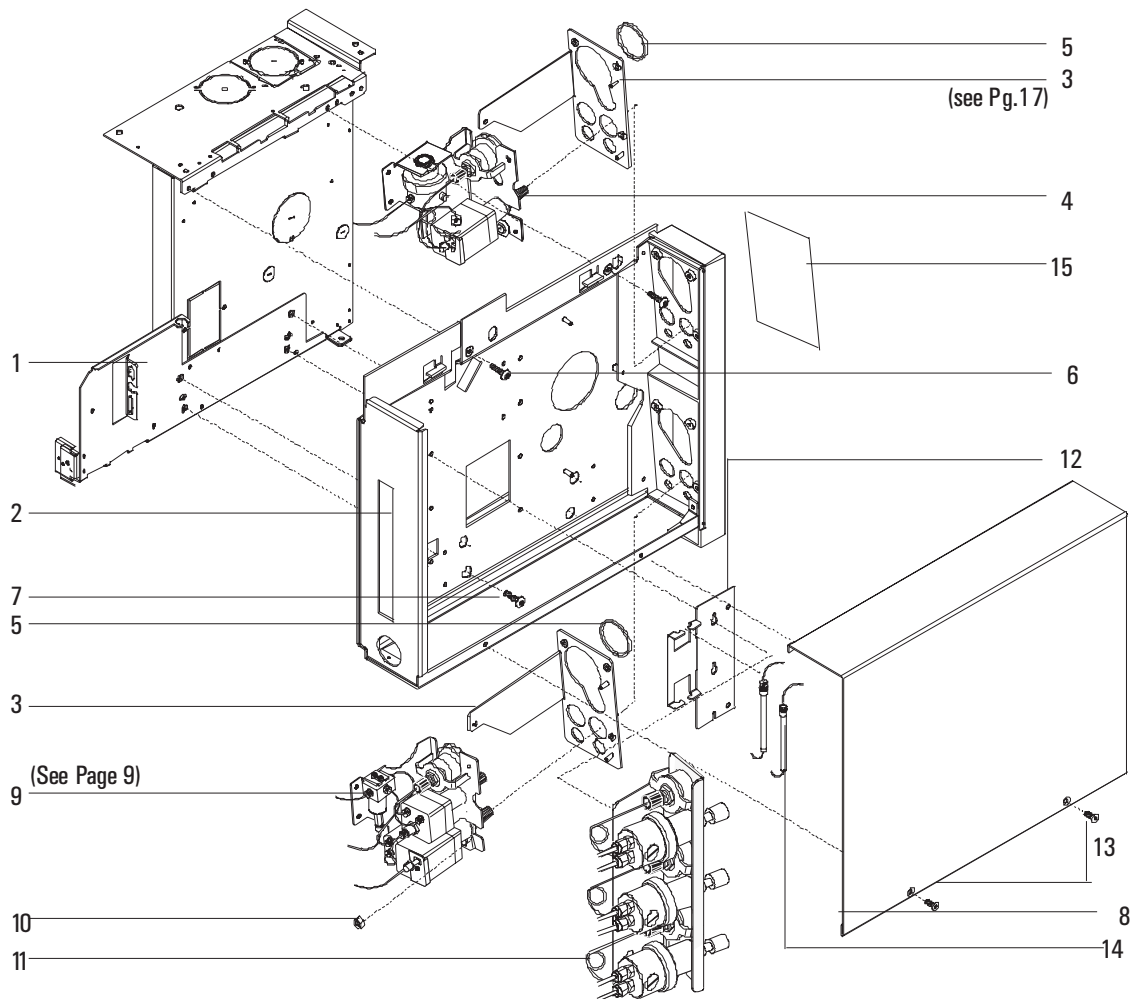


Figure 1310-3 Pneumatic Carrier Assembly