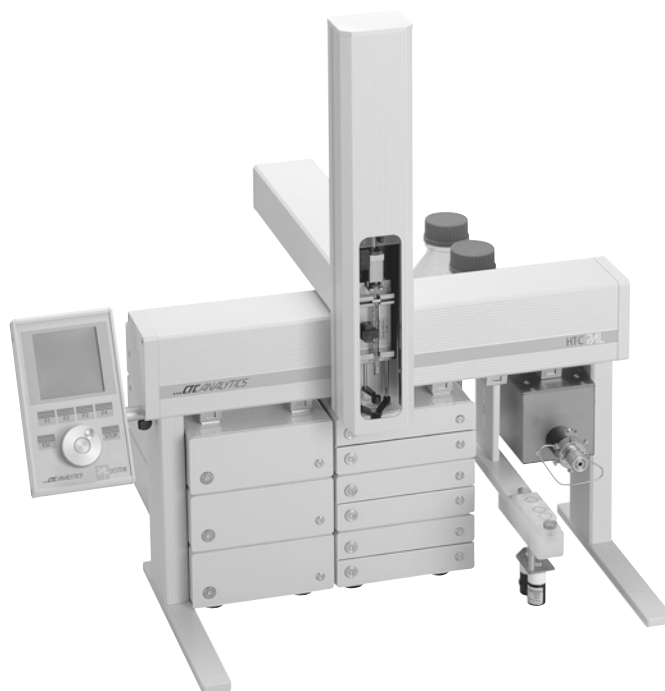
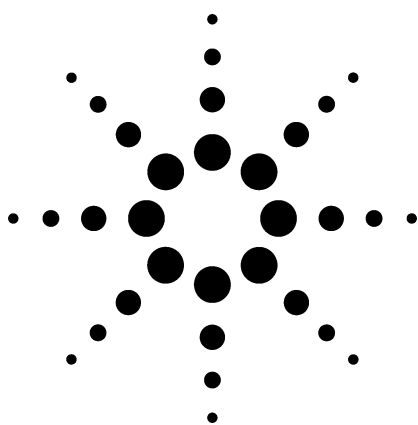


# CTC Analytics Autosampler Consumables

## Selection Guide for HTC-PAL Supplies



### Convenience, Quality, and Productivity

To better serve Agilent HPLC and LC/MS instrument users who choose CTC Analytics' autosamplers for high throughput and flexible sample introduction, Agilent has partnered with CTC to provide a fully integrated system, including CTC approved consumables.

#### CTC Consumables for HPLC and LC/MS

Agilent provides consumables recommended for use with CTC's HTC PAL for automated sample handling devices for liquid chromatography.

#### HTC PAL Liquid Injection Vials and Caps

Agilent provides a wide variety of vials and caps compatible with the HTC LC Injector. CTC recommends using Silicone/PTFE and PTFE/Silicone/PTFE septa for purity and penetration properties. Below are listed the most popular vials and caps.

Description	Unit	Part No.
Screw top vials 2 mL clear wide opening	100/pack	5182-0714
Blue screw caps, PTFE/silicone septa	100/pack	5182-0720
Screw vial, 2 mL, glass 0.2 mL microinsert	100/pack	5188-5390
Snap top vial 2 mL wide opening	100/pack	5182-0546
Snap cap, 11 mm, silicone/PTFE	100/pack	5182-0541
Crimp vial, 2 mL clear wide opening	100/pack	5181-3375
Crimp/snap vial, 2 mL integrated glass 0.2 mL insert	100/pack	9301-0977
Crimp cap, 11 mm, silver, PTFE/silicone septa	100/pack	5182-0552



### HTC PAL Liquid Injection Syringes

To accommodate various applications, the HTC PAL is compatible with fixed needle, 22 gauge, Pointstyle 3 syringes. CTC has designed and recommends special inert **X**-type syringes which feature zero carry-over and a long-lasting plunger for the applications that demand precision.

Description	Unit	Part No.
Syringe, <b>X</b> -type CTC 25 µL, Gas Tight		G4200-80117
Syringe, <b>X</b> -type CTC 50 µL, Gas Tight		5188-6485
Syringe, <b>X</b> -type CTC 100 µL, 22, Gas Tight (fast aspiration and eject speed)		G4200-80118
Syringe, <b>X</b> -type CTC 100 µL, 22S, Gas Tight (low dead volume)		G4200-80119
Syringe, CTC 10 µL, Gas Tight		G4200-80113
Syringe, CTC 25 µL, Gas Tight		G4200-80114
Syringe, CTC 100 µL, Gas Tight (fast aspiration and eject speed)		G4200-80115
Syringe, CTC 100 µL, S Gas Tight (low dead volume)		G4200-80116
Syringe, CTC 250 µL, Gas Tight		G6500-80102
Syringe, CTC 500 µL, Gas Tight		G6500-80103
Syringe, CTC 1000 µL, Gas Tight		G6500-80104
Syringe, CTC 2500 µL, Gas Tight		G6500-80105
Syringe, CTC 5000 µL, Gas Tight		G6500-80106
Plunger, replacement CTC-X 25 µL	3/pack	G4200-80112
Plunger, replacement CTC-X 100 µL	3/pack	G4200-80111
Plunger, replacement CTC 10 µL	10/pack	G4200-80103
Plunger, replacement CTC 25 µL	10/pack	G4200-80104
Plunger, replacement CTC 100 µL	10/pack	G4200-80105
Plunger, replacement CTC 250 µL	10/pack	G4200-80102
Plunger, replacement CTC 500 µL	10/pack	G4200-80106
Plunger, replacement CTC 1000 µL	1 each	G4200-80101
Plunger, replacement CTC 2500 µL	1 each	G4200-80107
Plunger, replacement CTC 5000 µL	1 each	G4200-80108

### HTC PAL Well Plates and Accessories

High sample throughput needs can be accommodated with the HTC Pal using a selection of sample well plates.

Description	Unit	Part No.
96 well plates, PP, 0.5 mL	10/pack	5042-1386
96 deep well plates, PP, 1mL	50/pack	5042-6454
384 well plates, PP 90 µL	30/pack	5042-1388
Closing mats for 96 well plate	50/pack	5042-1389
Well plate foil cutter, for maximum 22 gauge needles		5188-6479
Sample tray, CTC, for PAL stack		G6500-80122

**HTC PAL Sampling Valve Supplies****For Valco Cheminert Valves**

Each Cheminert metal sample loop includes two 1/16" stainless nuts and two stainless ferrules. Each PEEK loop includes two PEEK nuts and two PEEK ferrules.

<b>Description</b>	<b>Part No.</b>
Loop, PEEK 2 µL, Cheminert Injection Valve	5188-6469
Loop, PEEK 5 µL, Cheminert Injection Valve	5188-6470
Loop, PEEK 10 µL, Cheminert Injection Valve	5188-6467
Loop, PEEK 20 µL, Cheminert Injection Valve	5188-6468
Loop, 2 µL, Cheminert Injection Valve	5188-6457
Loop, 10 µL, Cheminert Injection Valve	5188-6458
Loop, 20 µL, Cheminert Injection Valve	5188-6459
Loop, 50 µL, Cheminert Injection Valve	5188-6460
Loop, 100 µL, Cheminert Injection Valve	5188-6461
Loop, 250 µL, Cheminert Injection Valve	5188-6462
Loop, 500 µL, Cheminert Injection Valve	5188-6463
Loop, 1000 µL, Cheminert Injection Valve	5188-6464
Loop, 2000 µL, Cheminert Injection Valve	5188-6465
Loop, 5000 µL, Cheminert Injection Valve	5188-6466
PEEK Needle Seal, Valco, 22 gauge	10/pack 5188-6476
Teflon Needle Seal, Valco 22 gauge	10/pack 5188-6477

**For Rheodyne High Pressure Valves (7996) Sample Loops for Other Rheodyne**

Stainless steel sample loops for the Rheodyne 7996 (600 bar) valve come with Swagelok fittings to accommodate high pressure.

<b>Description</b>	<b>Part No.</b>
Sample loop, 5 µL, SS	5188-6486
Sample loop, 10 µL, SS	5188-6487
Sample loop, 20 µL, SS	5188-6488
Sample loop, 50 µL, SS	5188-6489
Sample loop, 100 µL, SS	5188-6490
Stator, Rheodyne Series 7996	5188-6491
RheBuild Kit, includes Rotor Seal, 3/32 hex wrench	5188-6492
Needle Seal, Rheodyne Valve	5188-6478

## For More Information

For more information on our products and services, visit our Web site at [www.agilent.com/chem](http://www.agilent.com/chem).

Agilent shall not be liable for errors contained herein or for incidental or consequential damages in connection with the furnishing, performance, or use of this material.

Information, descriptions, and specifications in this publication are subject to change without notice.

© Agilent Technologies, Inc. 2006

Printed in the USA  
June 5, 2006  
5989-5121EN

