

Vydac® Venture® A

Protein A Affinity Columns for Antibody Purification

- High binding capacity for polyclonal and monoclonal antibodies
- No non-specific binding—patented ICEtech™ (*Inert Coating Enhancement Technology, U.S. Patent No. 6,802,966*) completely passivates the silica surface to ensure highly purified antibodies
- Long lifetime—proven over 300 runs
- Standard HPLC column format uses biocompatible PEEK hardware for use with HPLC or FPLC instruments

The Venture® A column is the first affinity column to take advantage of silica's rigid porous structure, providing increased productivity over other supports. Grace's patented technology, ICEtech™ (inert coating enhancement technology), eliminates non-specific binding on the silica surface enabling the breakthrough use of silica for affinity separations.

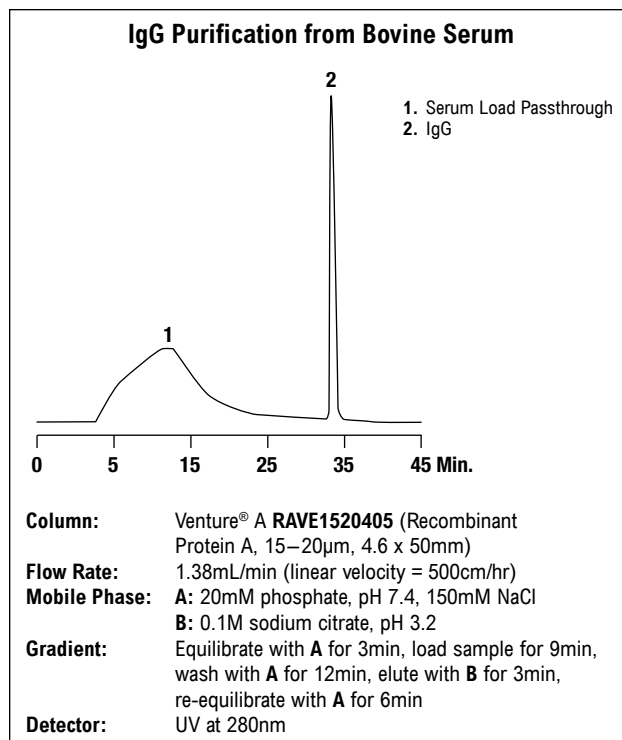
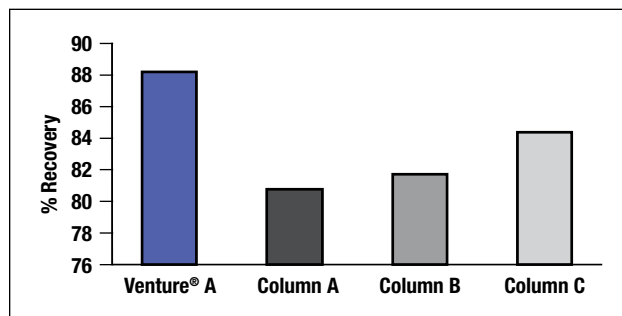
Venture® A columns use a recombinant protein A ligand for binding antibodies. They are designed to perform both as an analytical tool for fast, accurate measurement of antibody titers and as a quick and easy way to purify antibodies from cell culture supernate, serum, or other feedstocks.

Venture® A Characteristics	
Composition:	Wide-porous spherical silica treated with ICEtech™ surface passivation technology
Particle Size:	15–20µm
Ligand:	Recombinant protein A
pH Range:	pH 1 to 8 (long term), pH 1 to 9 (short term)
Pressure:	Maximum operating pressure = 3000psig (200bar)
Recommended Mobile-Phase Velocity:	500cm/h
Mobile-Phase Velocity Range:	150–5000cm/h
Delivery Conditions:	20% ethanol
Storage:	At +4 to +8°C in 20% ethanol
Chemical Stability:	Stable in all aqueous buffers with pH 1 to 8 commonly used in protein A chromatography

Static Capacity of Venture® A Affinity Columns	
Polyclonal	
Species	Capacity (mg/mL)
human	40
bovine	23
mouse	38
rabbit	37
sheep	13
Monoclonal	
Subclass	Capacity (mg/mL)
IgG1 Kappa	15
IgG2a	29
IgG2b	23

High Recovery: Experience Up to a 10% Improvement in Recovery Compared to Other Commercially Available Columns, Increasing Your Yield and Measurement Accuracy

20mM Phosphate and 0.15M NaCl Buffer pH 7.4 was loaded on each column up to 90% of the total capacity. After loading the columns were washed with phosphate buffer and the IgG eluted with citrate buffer pH 3.2.



Venture® A Affinity Columns

Particle Size	i.d.	50mm	100mm
15–20µm	2mm	RAVE1520205	—
	4.6mm	RAVE1520405	RAVE1520410
	7.5mm	—	RAVE1520710

NOTE: Additional column diameters and lengths are available on request. Please contact Grace Davison Discovery Sciences to discuss your requirements.

related products

Venture® Immunoaffinity columns are also developed for small molecules, which have been fully validated. Applications areas include: **Food** (Aflatoxin, Lactoferrin, Vitamin B12, Testosterone, Nortestosterone), **Endocrine Disruptors** (17α-Ethynyl Estradiol, 17β-Estradiol, Estrone, Bisphenol A) and **Pollutants** (Chlorophenoxy Acetic Acid Herbicides, Phenylurea Herbicides, Organophosphorus Pesticides, Vinclozolin Fungicide). For details, visit www.discoverysciences.com.