

METHOD TRANSFER

TIME CONSTRAINTS

REPRODUCIBILITY

Clear your workflow
hurdles and make
every milliliter
of solvent count.

Agilent ZORBAX Solvent Saver and RRHT columns



Agilent ZORBAX Solvent Saver (3.0 mm I.D.) and Rapid Resolution High Throughput (RRHT) (1.8 μ m) columns can reduce HPLC solvent waste by 50% or more.

With Agilent Solvent Saver and RRHT columns, you can:

- Dramatically decrease solvent usage while maintaining resolution and decreasing your analysis time.
- Lower your solvent disposal costs.
- Lengthen your periods of unattended operation.

Best of all, you don't have to change your bonded phase or modify your LC configurations. That's because ZORBAX Solvent Saver and RRHT columns are compatible with standard HPLC systems, and are available in all ZORBAX phases.

40% Discount

Quote CS97 when ordering

Crawford Scientific™ Ltd
Holm Street
Strathaven
Lanarkshire
ML10 6NB
Scotland, UK
Phone: +44 (0)1357 522961
Fax: +44 (0)1357 522168

enquiries@crawfordscientific.com

<http://www.crawfordscientific.com>

Our measure is your success.

To learn how every drop of solvent
can work harder for you, visit

www.crawfordscientific.com/zorbax_solvent_saver.htm

See other side for proof chromatograms.

[products](#) | [applications](#) | [software](#) | [services](#)



Agilent Technologies

 **crawfordscientific**

Chromatography...every step of the way

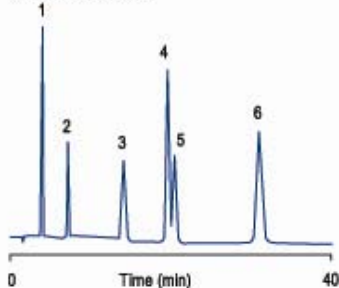
These chromatograms prove that you can use less solvent without compromising your results.

Separation of Antibacterials on Columns Having Different Diameters

Column: ZORBAX SB-C18

SB-C18

4.6 x 150 mm, 5 µm
Part No. 883975-902



Solvent Used: 31 mL

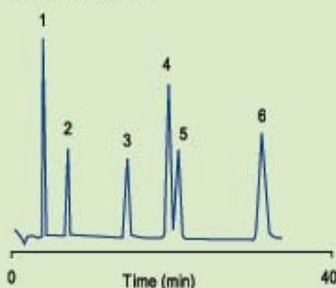
Flow Rate: 1.0 mL/min

Injected: 3 µL

Detector Cell Volume: 8 µL

Solvent Saver SB-C18

3.0 x 150 mm, 5 µm
Part No. 883975-302



Solvent Used: 15 mL

% Solvent Saved = 52%

Flow Rate: 0.5 mL/min

Injected: 2 µL

Detector Cell Volume: 8 µL

Mobile Phase*: 20% ACN: 80% Citrate/
phosphate pH 2.6
*200/87/713 ACN/
0.2M Na₂HPO₄/
0.1M Citric Acid

Temperature: Ambient

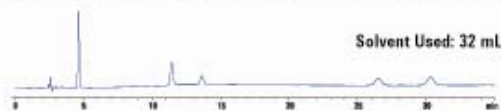
Sample: Antibacterials:
1. Sulfamerazine
2. Furazolidone
3. Oxolinic acid
4. Sulfadimethoxine
5. Sulfagunioxoline
6. Nalidixic acid

ZORBAX Solvent Saver columns reduce solvent use by more than 50% – without changing your LC configuration.

Reduce Column Length, Particle Size for High Resolution with Solvent Savings

Eclipse Plus C18

4.6 x 250 mm, 5 µm
Part No. 959990-902

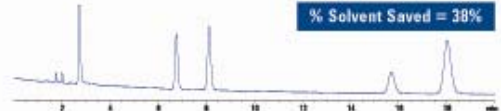


Solvent Used: 20 mL

% Solvent Saved = 38%

Rapid Resolution

Eclipse Plus C18
4.6 x 150 mm, 3.5 µm
Part No. 959963-902



Solvent Used: 7 mL

% Solvent Saved = 78%

Rapid Resolution HT

Eclipse Plus C18
4.6 x 50 mm, 1.8 µm
Part No. 959941-902



Conditions: A=pH 4.5 Na Acetate
B= Methanol (60:40)

Flow Rate: 1.0 mL/min

Flow cell: Micro/High Pressure
6 mm, 1.7 µL

Detection: UV 254 nm

In this example, analysis time and solvent use were reduced by two thirds *without compromising resolution.*

Make smarter use of valuable solvents!



Agilent Technologies



crawfordscientific

Chromatography...every step of the way