

REFLECT™

Coated Polysaccharide Chiral Columns

NEW High performance chiral columns at an affordable price



Regis Technologies, a leader in chiral chromatography for more than 45 years, introduces a new line of coated polysaccharide chiral columns. Reflect™ coated amylose and cellulose chiral columns are high performance polysaccharide phases suitable for a wide range of chiral compounds in normal phase HPLC and SFC modes. Unique, proprietary, phase coverage provides excellent peak shape and improved resolution versus leading chiral phases. This high resolution greatly improves preparative loading, leading to greater productivity and higher purity separations. Combined with attractive pricing and rapid delivery, Reflect chiral columns deliver the performance and productivity you expect.

- High performance media provides excellent peak shape and resolution
- Compatible with a wide range of solvents and separation modes (normal phase HPLC and SFC)
- Fully scalable from 3-20 μm
- Fast delivery—all sizes, anywhere in the world

Let us help you find the right column for your separation. Regis offers free compound screening with results delivered within three days. Contact us to get started today.

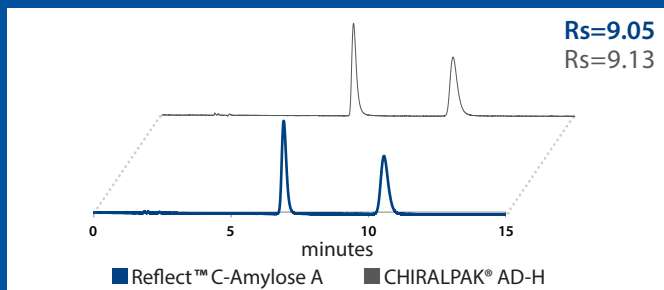


THE REFLECT™ GUARANTEE

If our analytical columns ($\leq 4.6\text{mm}$ ID) do not provide equivalent or better separations as compared to a competing column of the same particle size, phase type, and dimensions, return the column within 45 days for a full refund. Contact your representative for full details.

Achieve Equal or Better Separations compared to Leading Polysaccharide Phases

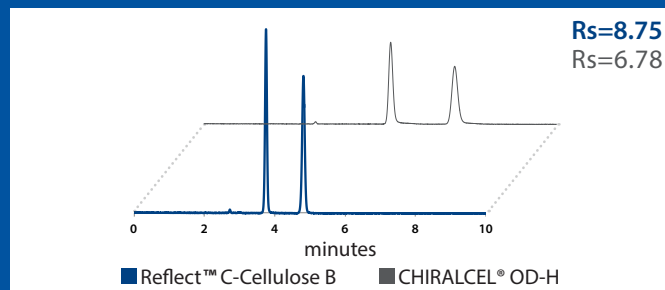
Reflect C-Amylose A provides equivalent separation of Bifonazole



Compound: Bifonazole
Column Size: 5 μm , 25 cm x 4.6 mm
Mobile Phase: (80/20) Hexane/Ethanol

Flow Rate: 1.5 mL/min
Detection: UV 228 nm
Catalog #: 1-580204-300

Reflect C-Cellulose B provides better separation of Benzoin



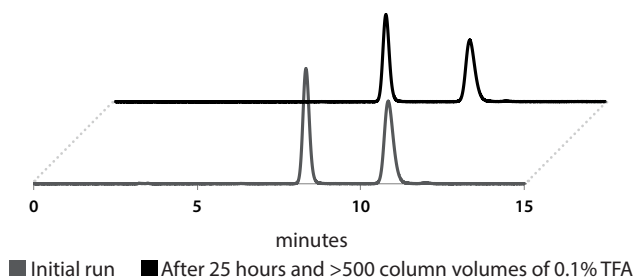
Compound: Benzoin
Column Size: 5 μm , 25 cm x 4.6 mm
Mobile Phase: (80/20) Hexane/IPA

Flow Rate: 1.5 mL/min
Detection: UV 254 nm
Catalog #: 1-590204-300

REFLECT™ Coated Polysaccharide Chiral Columns

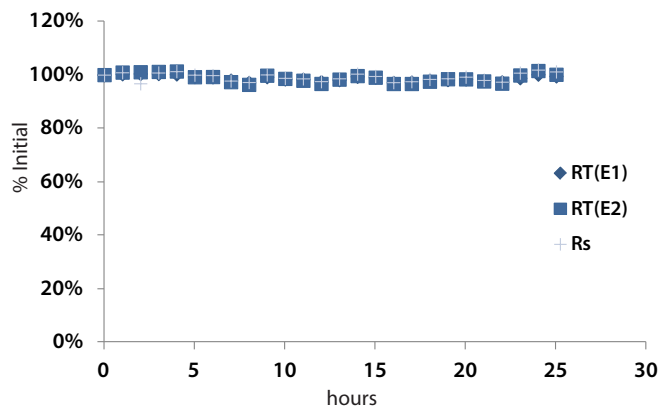
EXCELLENT STABILITY

No loss of resolution after 25 hours and over 500 column volumes (CVs) of 0.1% trifluoroacetic acid



■ Initial run ■ After 25 hours and >500 column volumes of 0.1% TFA

No loss of retention or resolution after 25 hours of analysis time in 0.1% TFA



Compound: Ketolorac

Column: Reflect C-Amylose A, 5 μ m, 25 cm x 4.6 mm

Mobile Phase: (70/30/0.1) Hexane/Ethanol/TFA

Flow Rate: 1.5 mL/min for 25 hours = >500 CVs

Detection: UV 314 nm

Catalog #: 1-580204-300

REFLECT™ COATED PHASE CHARACTERISTICS

PRODUCT NAME	SELECTOR	EQUIVALENT COMPETITIVE PRODUCTS*	USP	PARTICLE SIZES	pH RANGE	MAXIMUM PRESSURE
Reflect C-Amylose A	Amylose tris(3,5-dimethylphenylcarbamate)	CHIRALPAK® AD®, AD-H®, AD-3; Lux® Amylose-1	L51	3, 5, 10, 20 μ m	2 - 9	6,000 psi
Reflect C-Cellulose B	Cellulose tris(3,5-dimethylphenylcarbamate)	CHIRALCEL® OD®, OD-H®, OD-3; Lux® Cellulose-1	L40			

* DAICEL, CHIRALCEL, CHIRALPAK, AD, AD-H, AD, OD, OD-H, OJ, are registered trademarks of DAICEL Corporation. All such trademarks are used by Chiral Technologies under license from DAICEL Corporation. Chiral Technologies, Inc. is a subsidiary of DAICEL Corporation. Lux is a registered trademark of Phenomenex Inc.

Contact us to learn more about Reflect™ coated and immobilized chiral stationary phases.



ABOUT REGIS TECHNOLOGIES, INC.

Regis Technologies, Inc. has been a recognized manufacturer of innovative consumables for the separation scientist since 1966. Our products include packed columns in sizes from analytical to preparative, bulk media for chiral and achiral separations, and specialty column and reagents. Regis also provides synthesis and separations services to the pharmaceutical, biotechnology, and other related industries. For more information, please visit www.registech.com.

t 847.967.6000

f 847.967.5876

www.registech.com

chromsales@registech.com

8210 Austin Avenue
Morton Grove, IL US 60053