

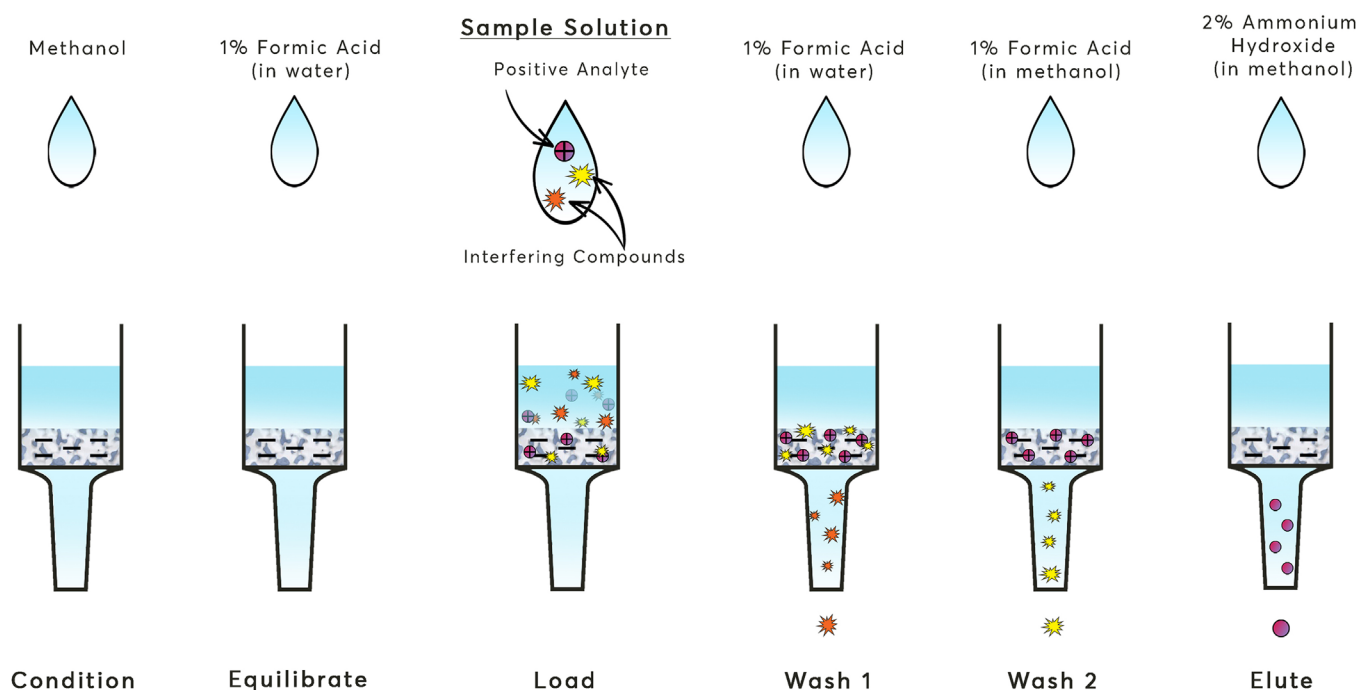
Microlute™ CP - SCX

Protocol: Example Method for the Extraction of Weak Bases

Microlute™ CP strong cation exchange (SCX) uses a sulphonic acid functional group immobilised on a polymeric base with a pKa of <1. Ideal for the capture of weak acidic analytes through anion exchange. As with all Microlute™ CP products, the polymeric base offers a secondary retention of neutral compounds.

| | |
|----------------|--|
| 1. Condition | Add 1 mL of methanol |
| 2. Equilibrate | 1 mL of 1% formic acid in water |
| 3. Load | 1 mL of sample diluted with 1% formic acid in water |
| 4. Wash 1 | 1 mL of 1% formic acid in water |
| 5. Wash 2 | 1 mL of 1% formic acid in methanol |
| 6. Elute | 1 mL of 2% ammonium hydroxide in methanol |
| 7. Analyse | Dilute eluent, directly inject or evaporate eluent and reconstitute in a more suitable composition for analysis. |

The Microlute™ CP method is an ideal starting point for several applications and for samples containing a wide range of components. Method development may be required to obtain optimal recovery and reproducibility.



porvair
sciences

Technical Support

Email: technical@porvairsciences.com

Phone: +441978 661144

Sales Enquiries

Email: int.sales@porvairsciences.com

Phone: +441978 661144

Microlute™ is a trademark of Porvair plc. © Copyright 2020. Porvair Sciences Ltd. All rights reserved. Whilst every effort has been made to ensure the accuracy of this document, due to continuous product development, the data contained is subject to constant revision and Porvair Sciences Ltd. reserves the right to change, alter or modify its contents. Porvair Sciences and JG Finneran Associates, Inc., are divisions of Porvair plc.